

Syntheses, spectral characterization, thermal properties and DNA cleavage studies of a series of Co(II), Ni(II) and Cu(II) polypyridine complexes with some new schiff-bases derived from 2-chloro ethyl amine

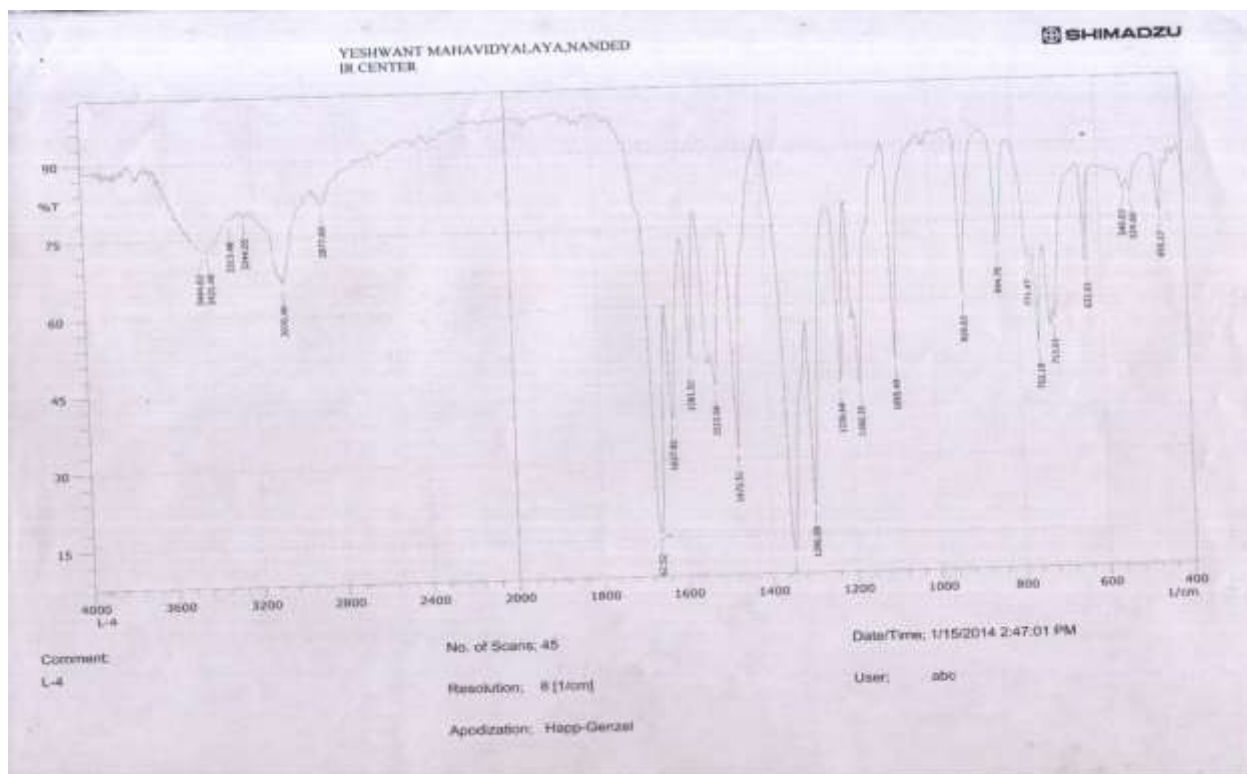
Kabeer A. Shaikh¹ and Khaled Shaikh²

¹Department of Chemistry, Sir Sayyed College of Arts, Commerce & Science, Aurangabad, 431001, India

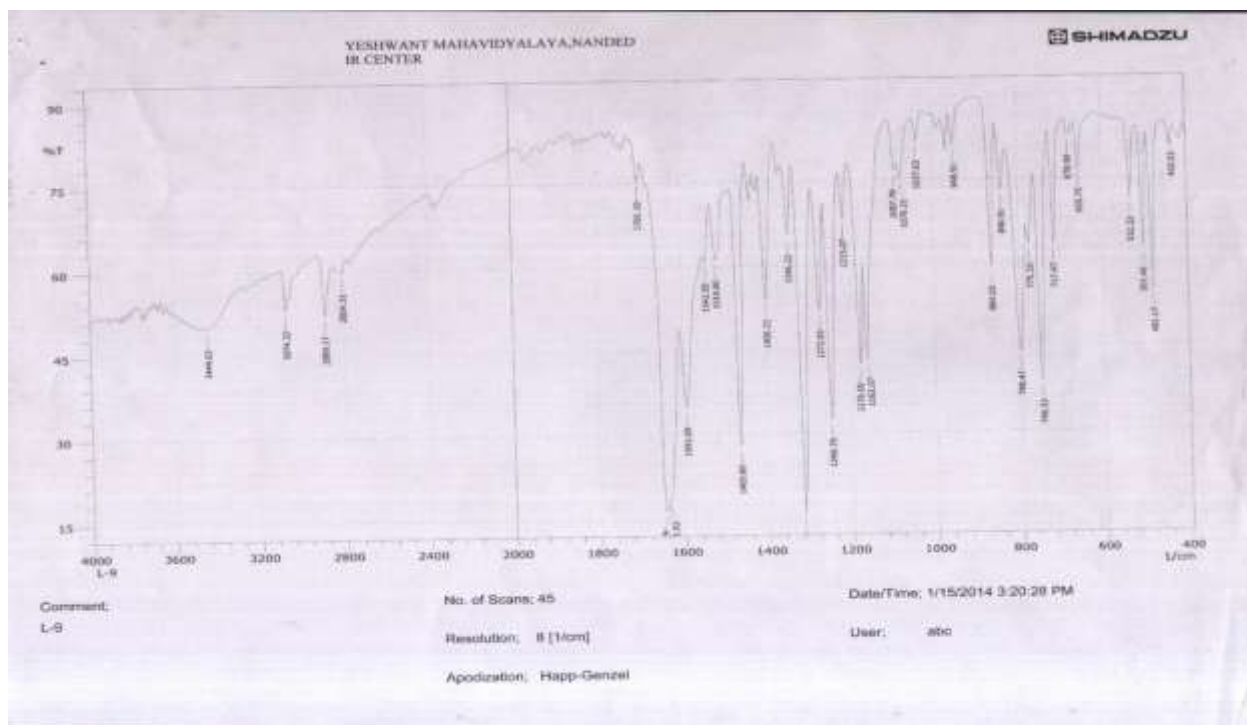
²Organic Chemistry Research Laboratory, Yeshwant Mahavidyalaya, Nanded, 431602, India

**Corresponding Author: Email: kabeershaikh485@gmail.com, khaledshaikh200@gmail.com*

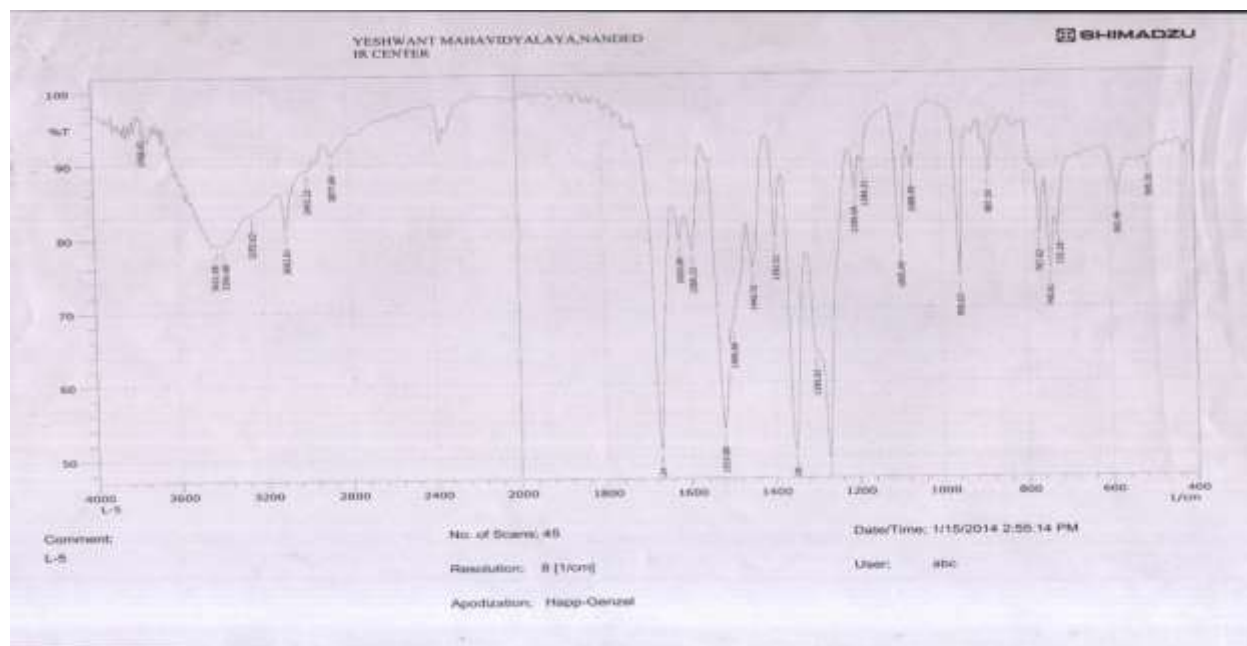
IR SPECTRA OF LIGANDS: (L¹)



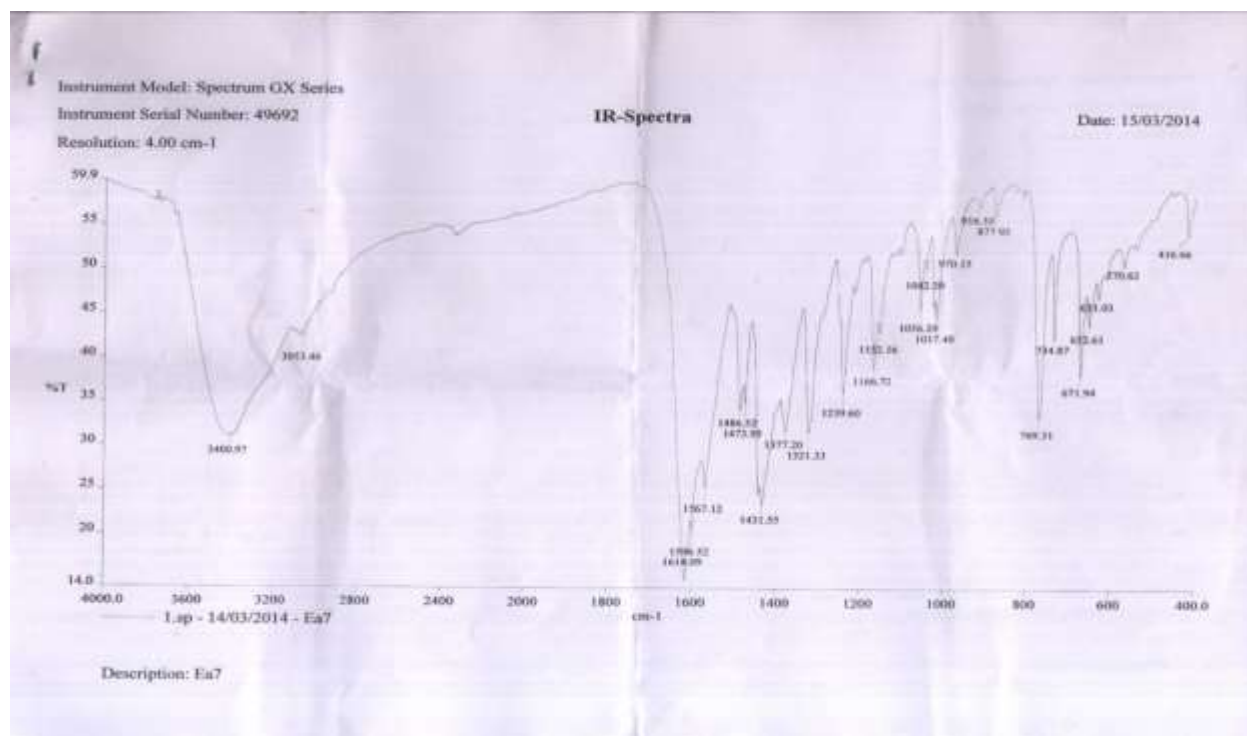
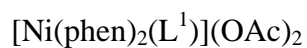
LIGAND: (L²)



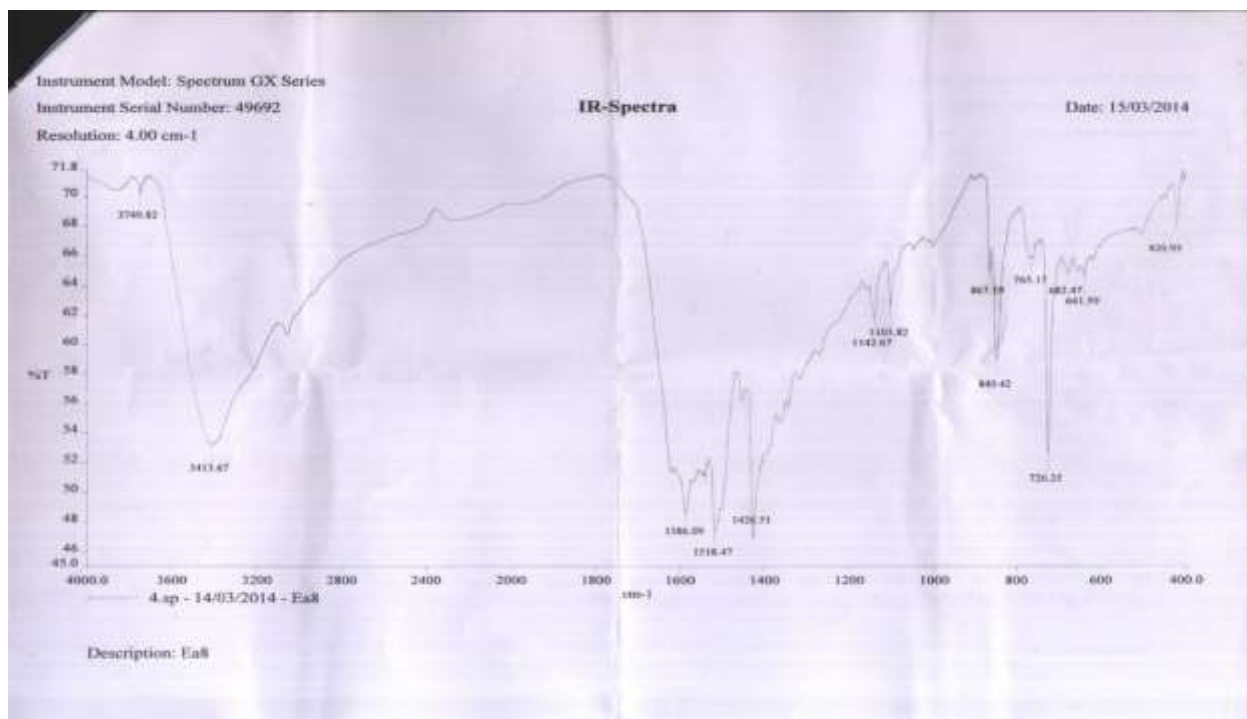
LIGAND: (L³)



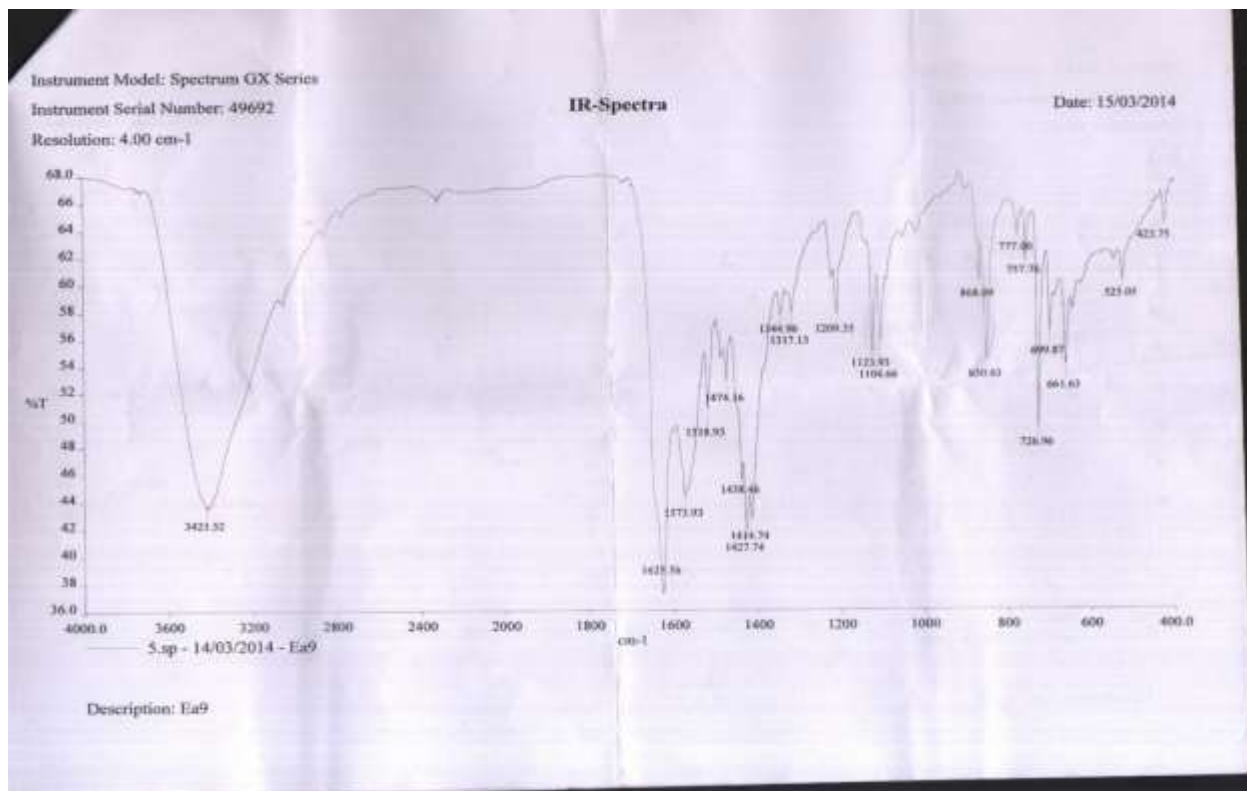
IR SPECTRA OF COMPLEXES:



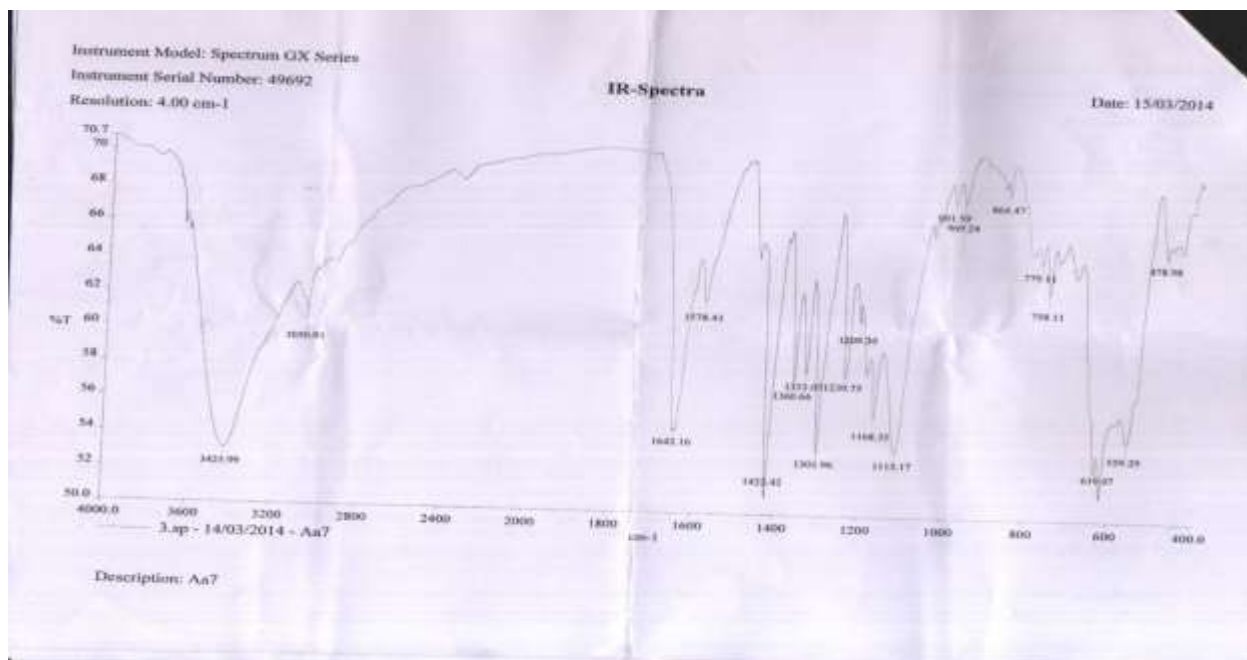
COMPLEX: $[\text{Ni}(\text{phen})_2(\text{L}^2)](\text{OAc})_2$



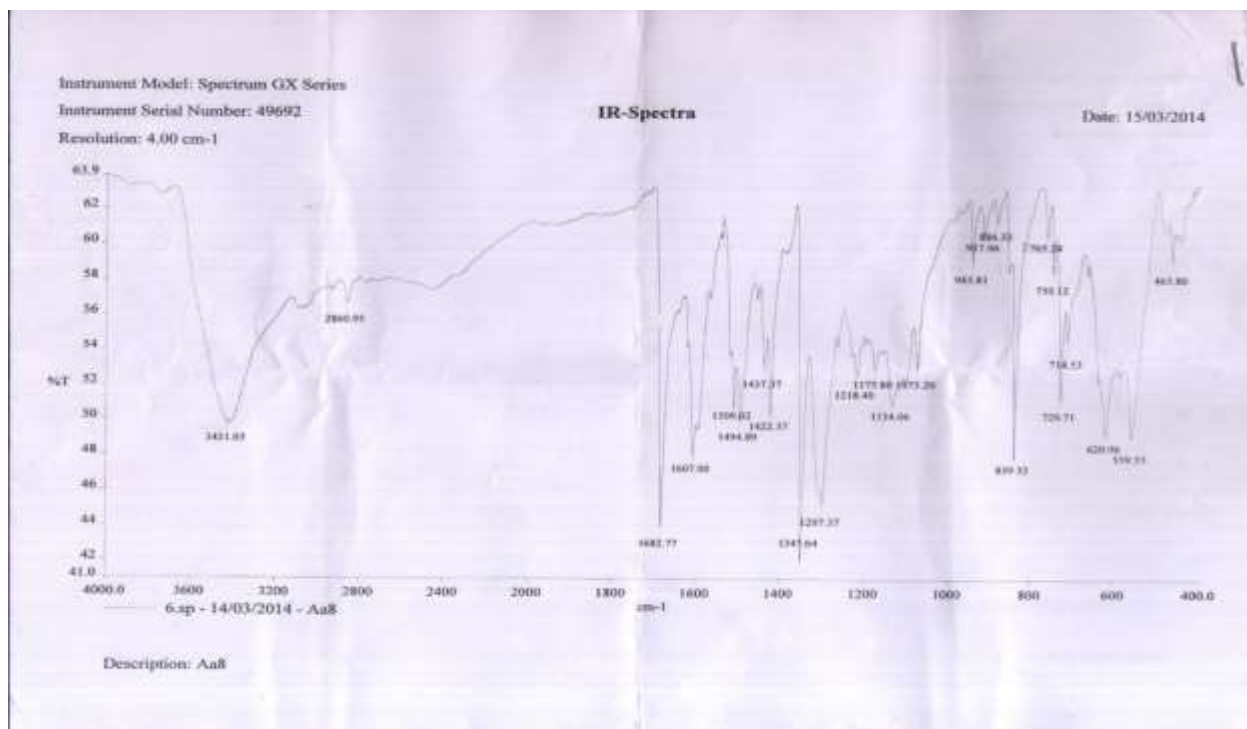
COMPLEX: $[\text{Ni}(\text{phen})_2(\text{L}^3)](\text{OAc})_2$



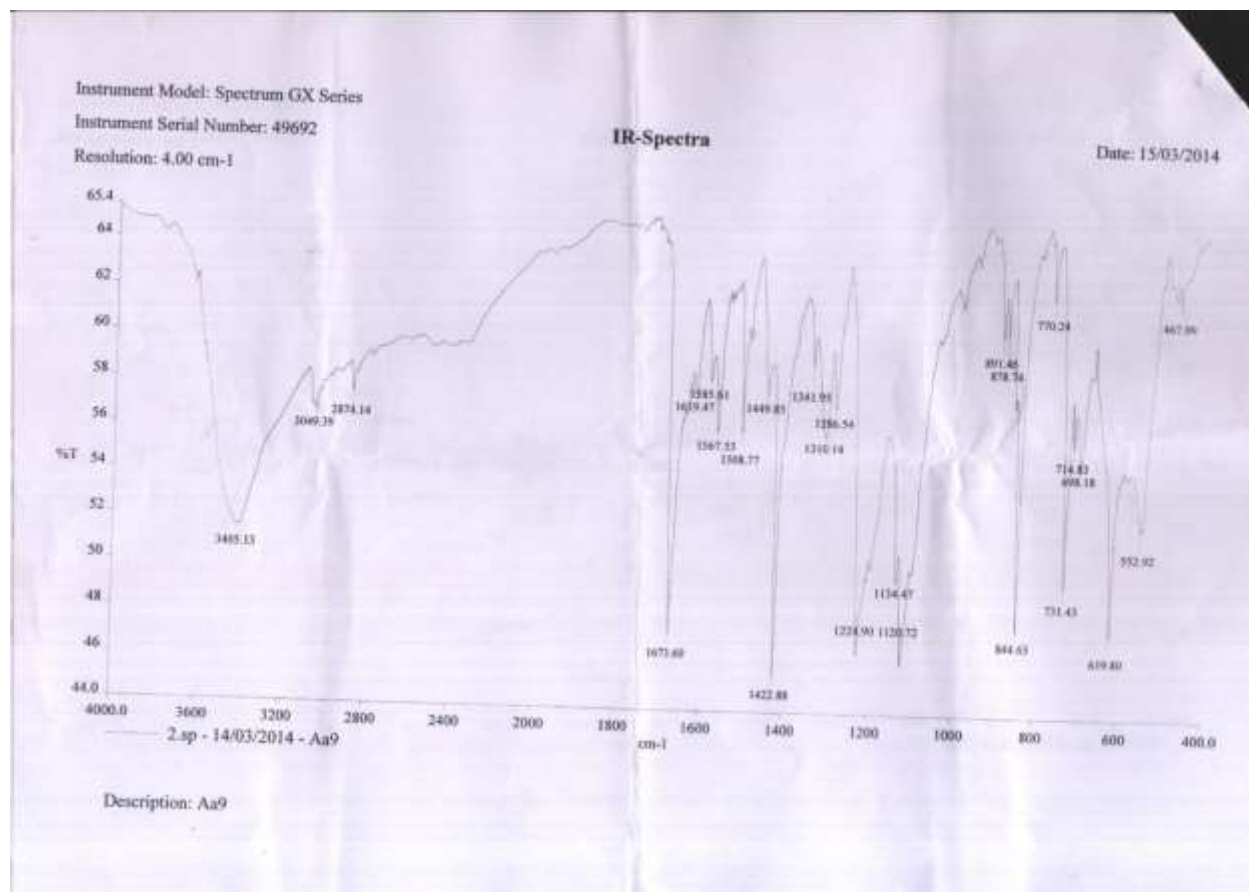
COMPLEX: $[\text{Co}(\text{phen})_2(\text{L}^1)](\text{OAc})_2$



COMPLEX: $[\text{Co}(\text{phen})_2(\text{L}^2)](\text{OAc})_2$



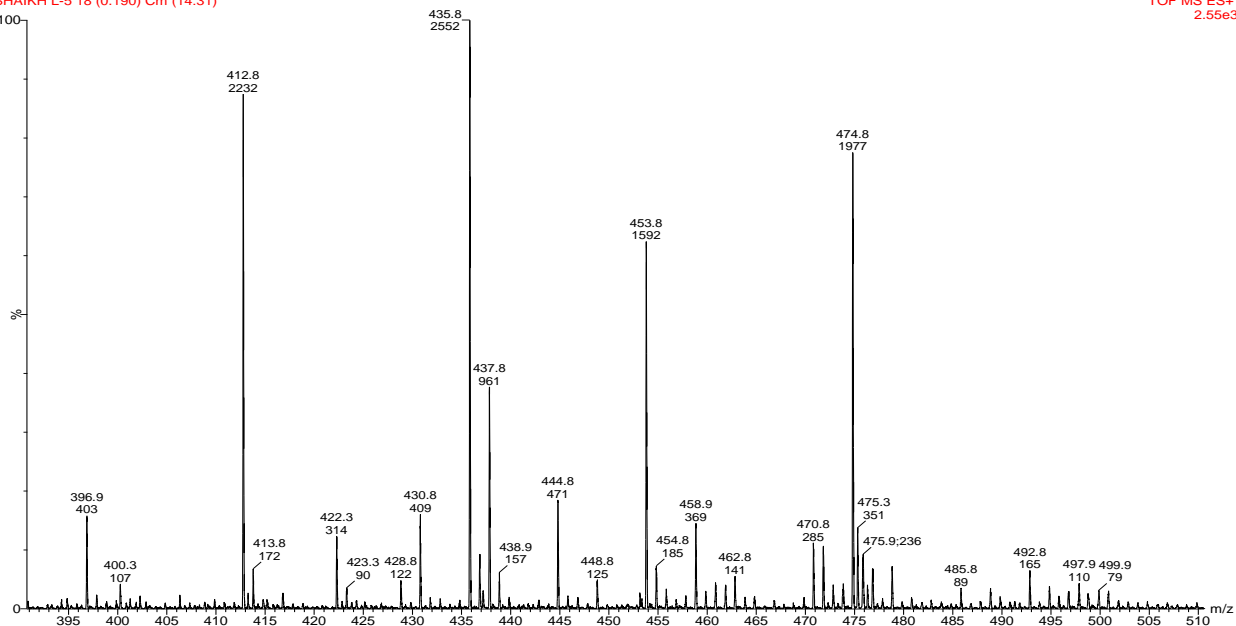
COMPLEX: $[\text{Co}(\text{phen})_2(\text{L}^3)](\text{OAc})_2$



MASS SPECTRA OF LIGANDS: (L¹)

WATERS, Q-TOF MICROMASS (LC-MS)
SHAIKH L-5 18 (0.190) Cm (14:31)

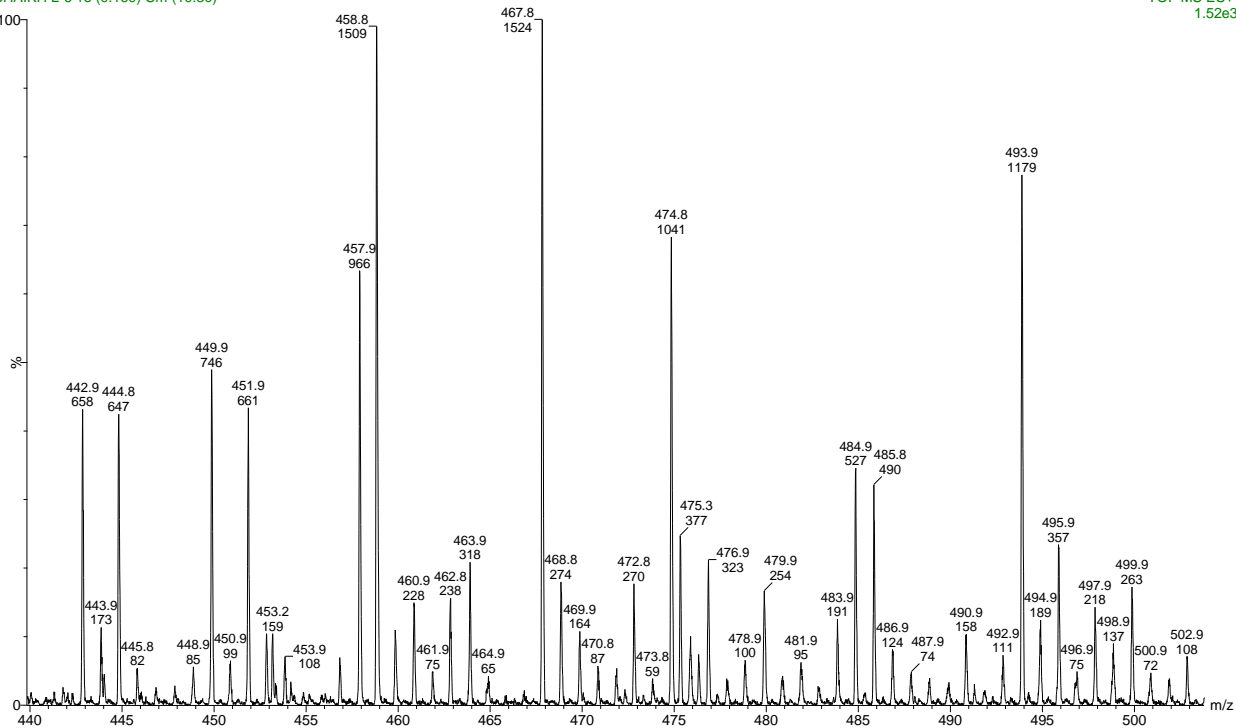
SAIF/CIL,PANJAB UNIVERSITY,CHANDIGARH
TOF MS ES+
2.55e3



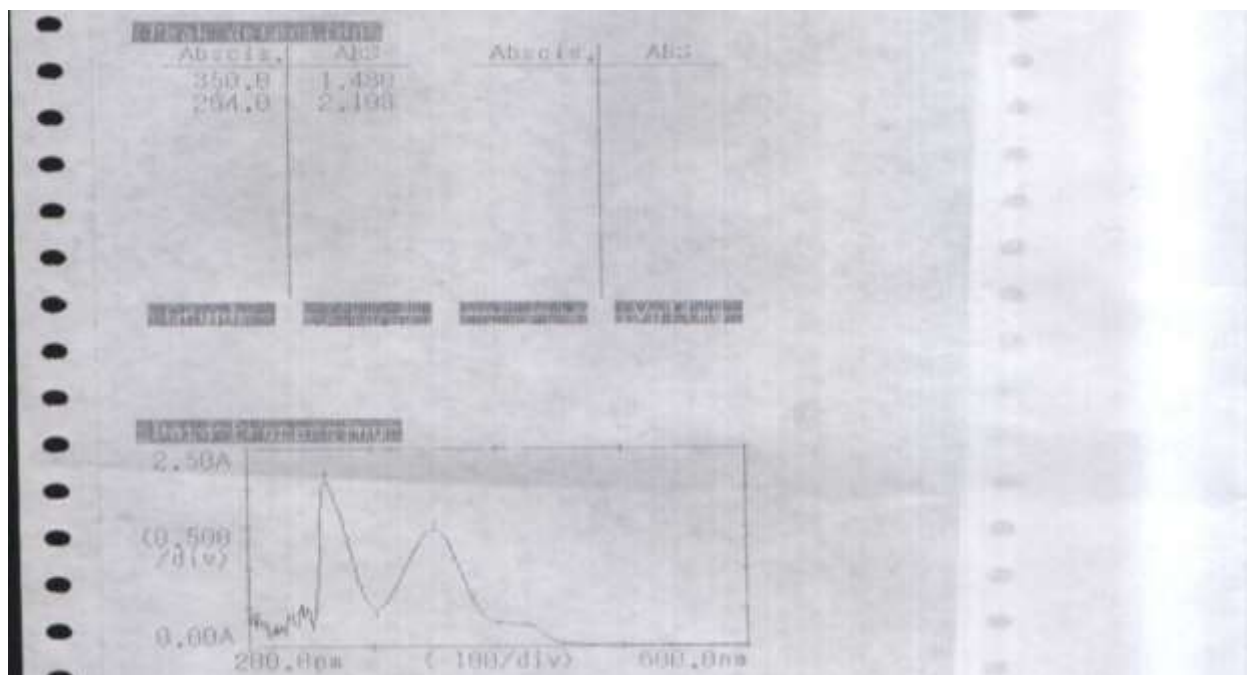
LIGAND: (L²)

WATERS, Q-TOF MICROMASS (LC-MS)
SHAIKH L-6 16 (0.169) Cm (10:30)

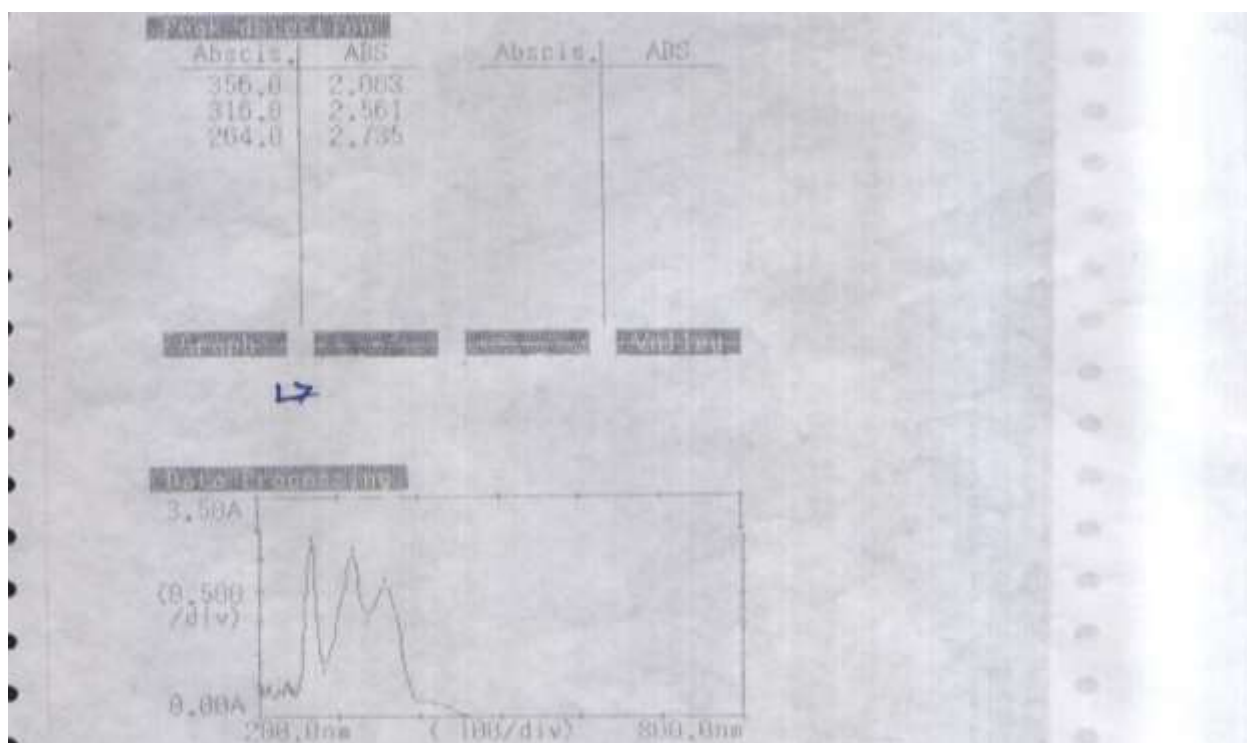
SAIF/CIL,PANJAB UNIVERSITY,CHANDIGARH
TOF MS ES+
1.52e3



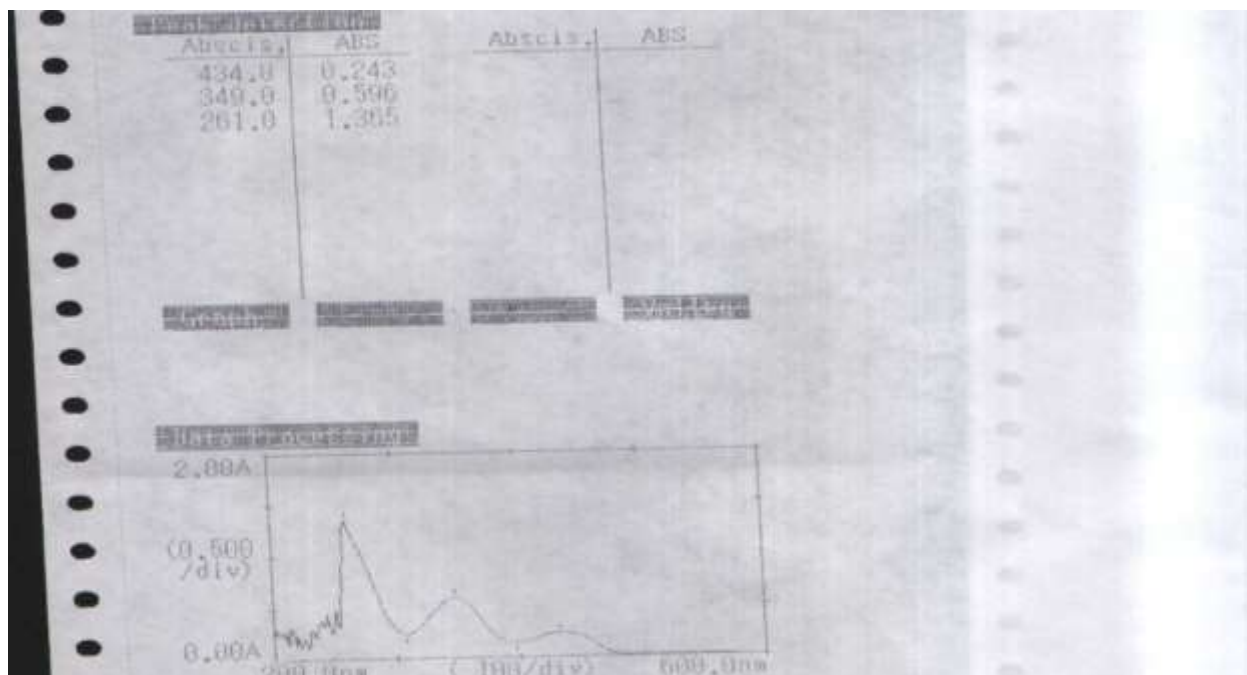
UV Vis. SPECTRA OF LIGANDS: (L¹)



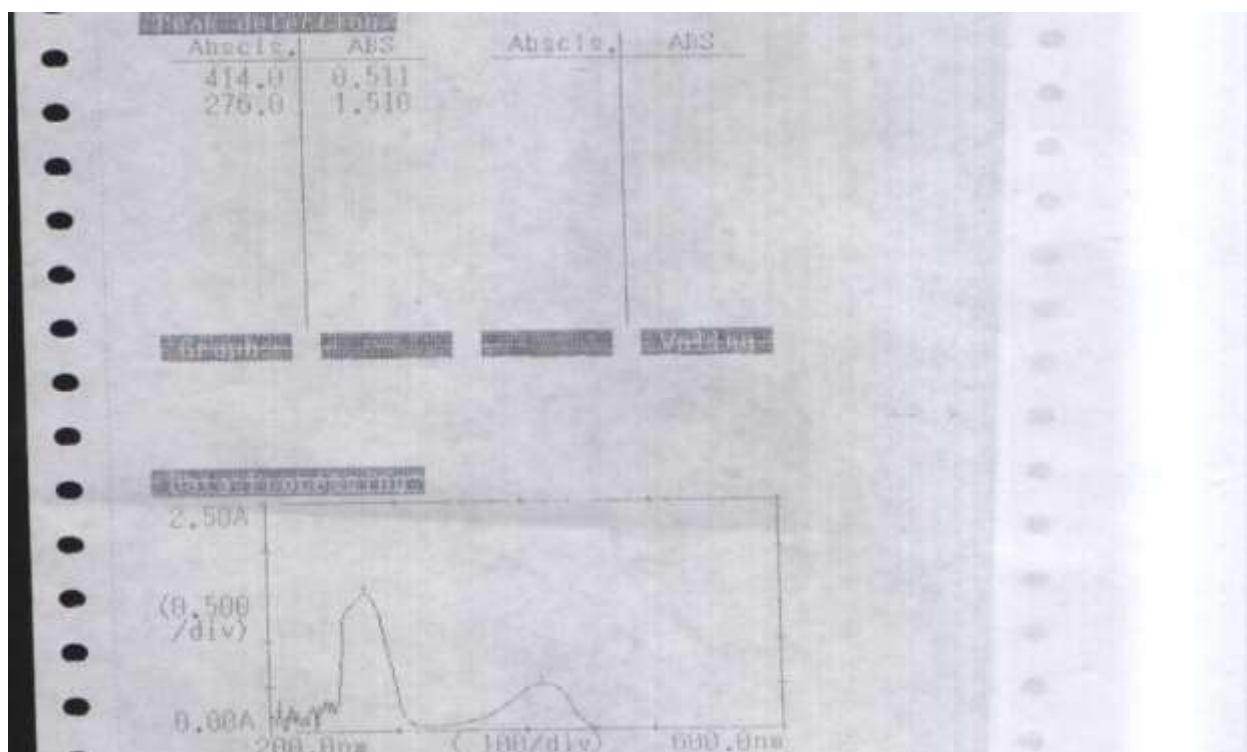
LIGAND: (L²)



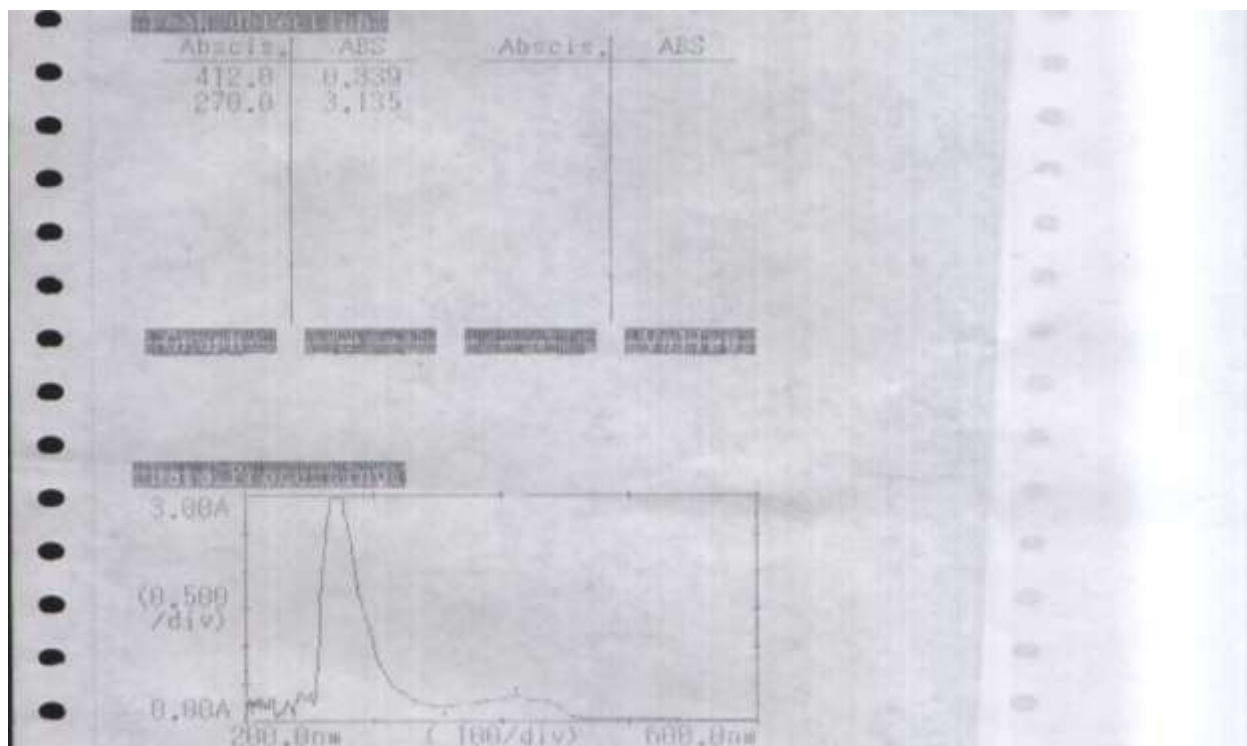
LIGAND: (L³)



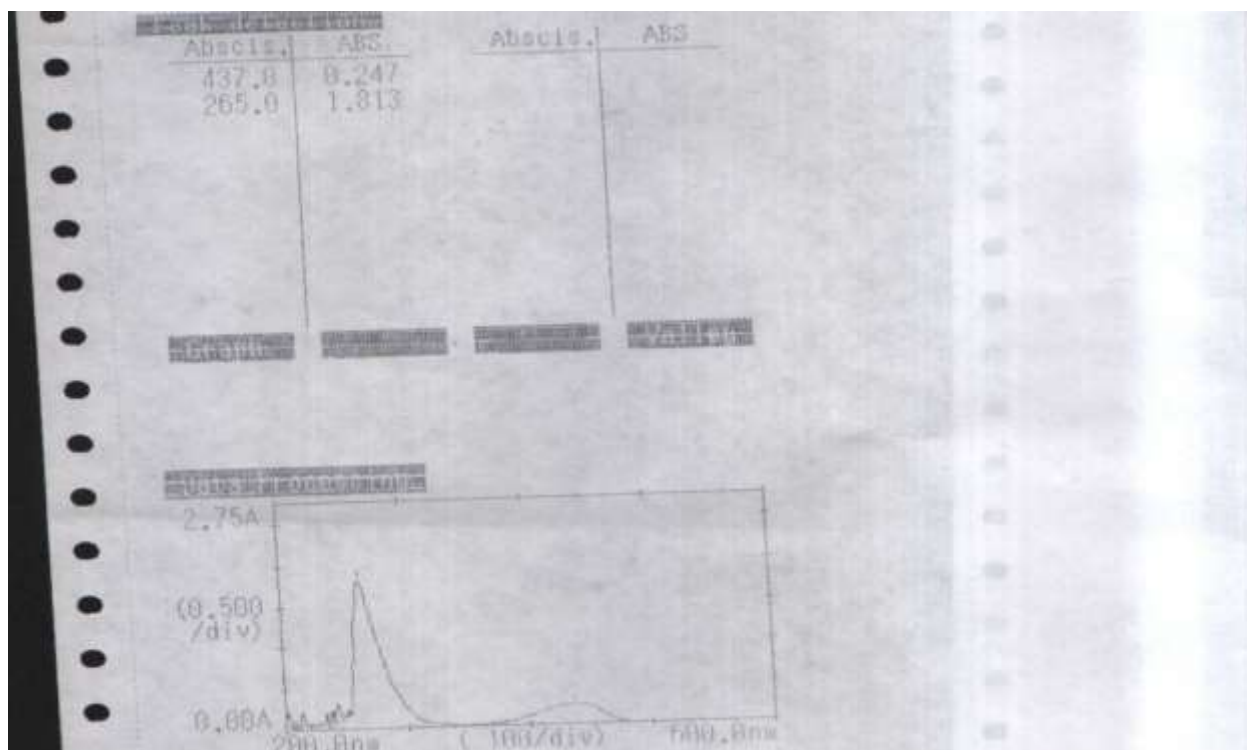
UV Vis. SPECTRA OF COMPLEXES: [Ni(phen)₂(L¹)](OAc)₂



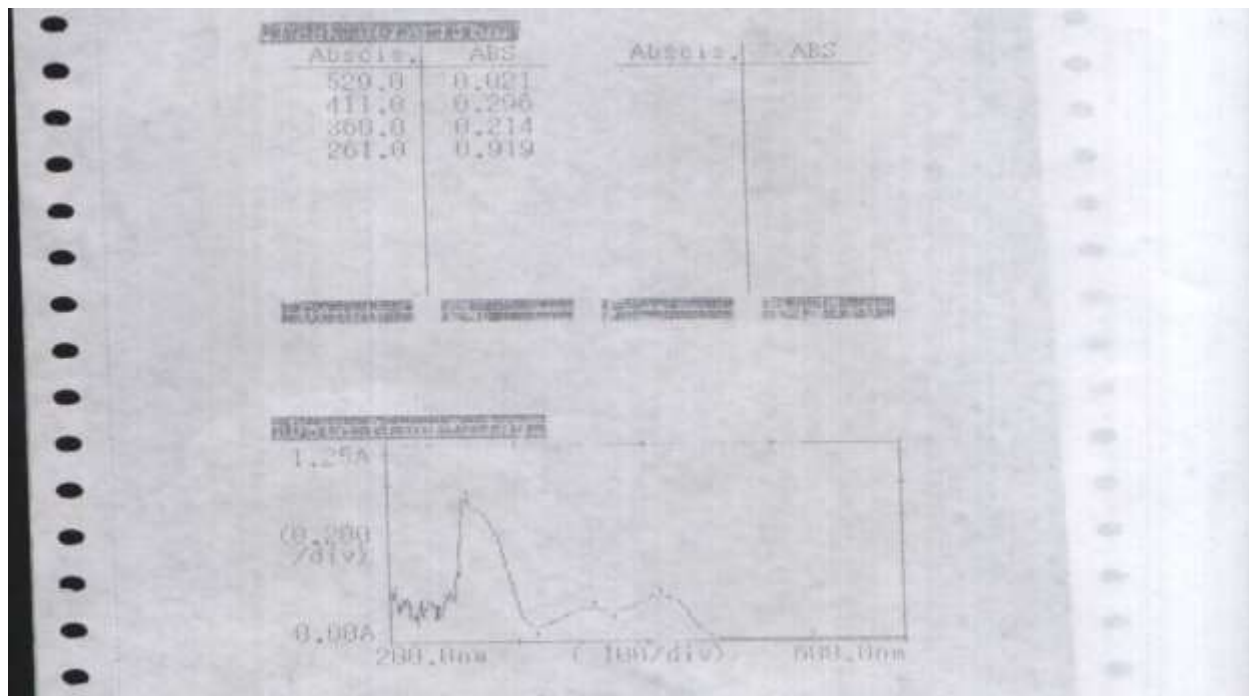
COMPLEX: $[\text{Ni}(\text{phen})_2(\text{L}^2)](\text{OAc})_2$



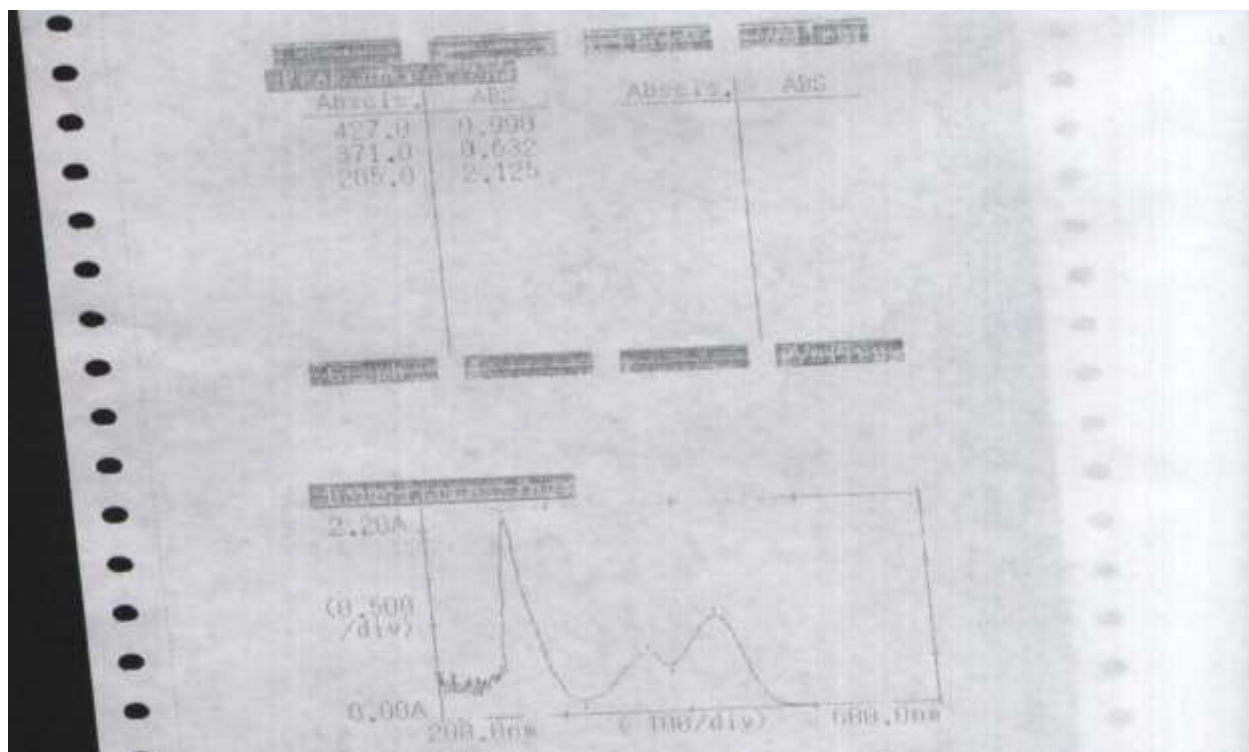
COMPLEX: $[\text{Ni}(\text{phen})_2(\text{L}^3)](\text{OAc})_2$



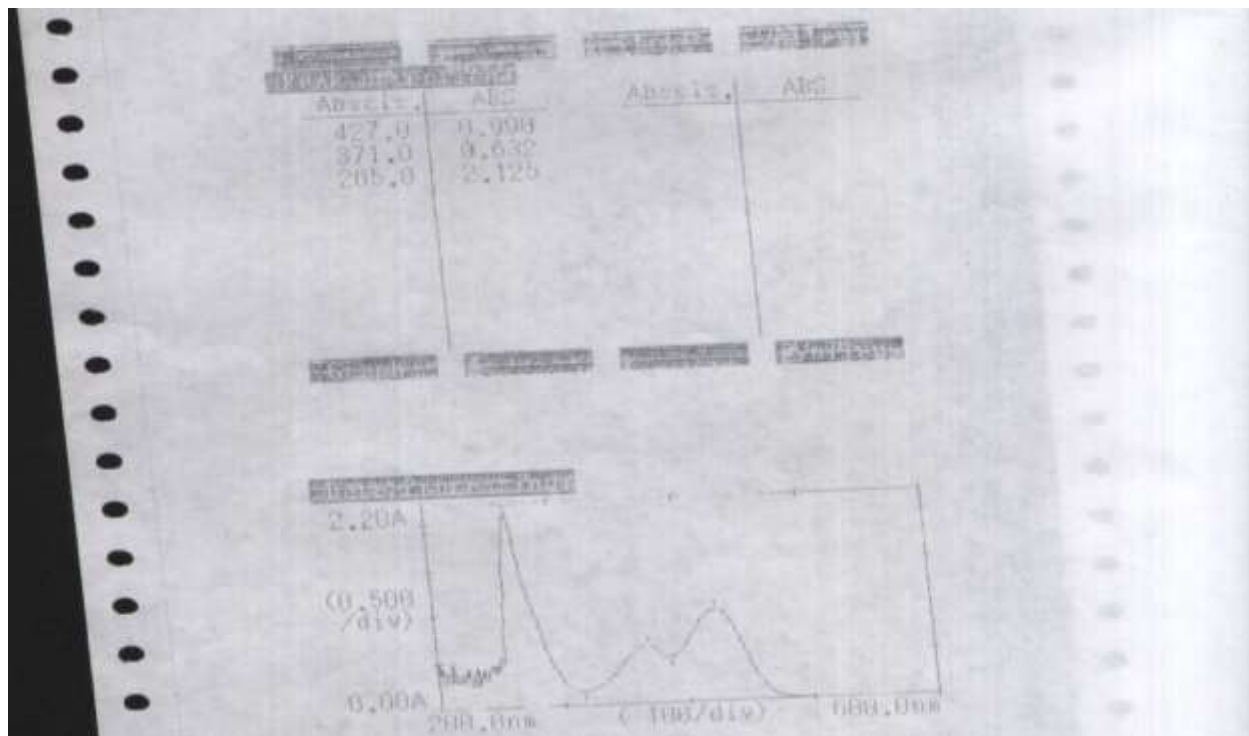
COMPLEX: $[\text{Co}(\text{phen})_2(\text{L}^1)](\text{OAc})_2$



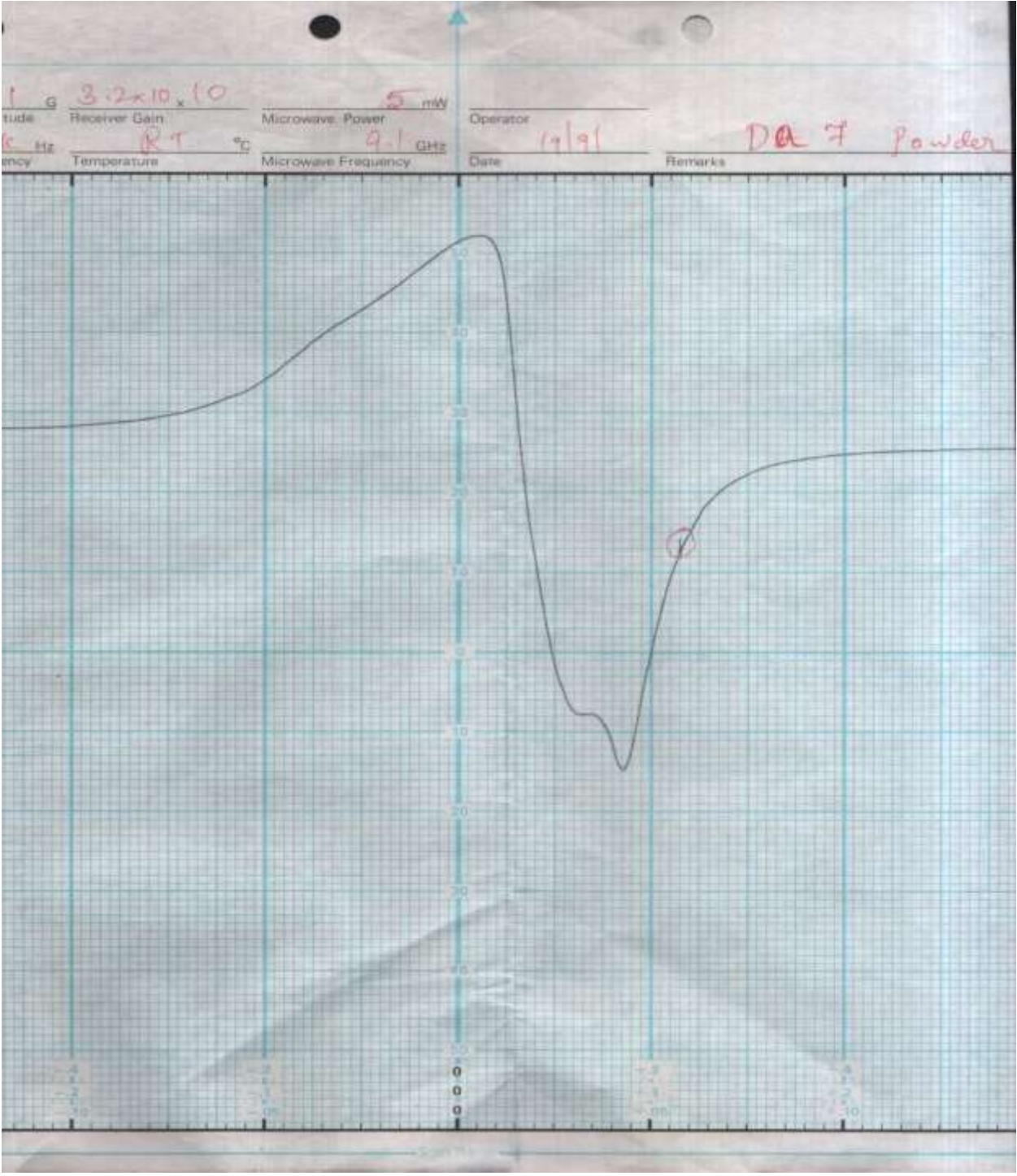
COMPLEX: $[\text{Co}(\text{phen})_2(\text{L}^2)](\text{OAc})_2$



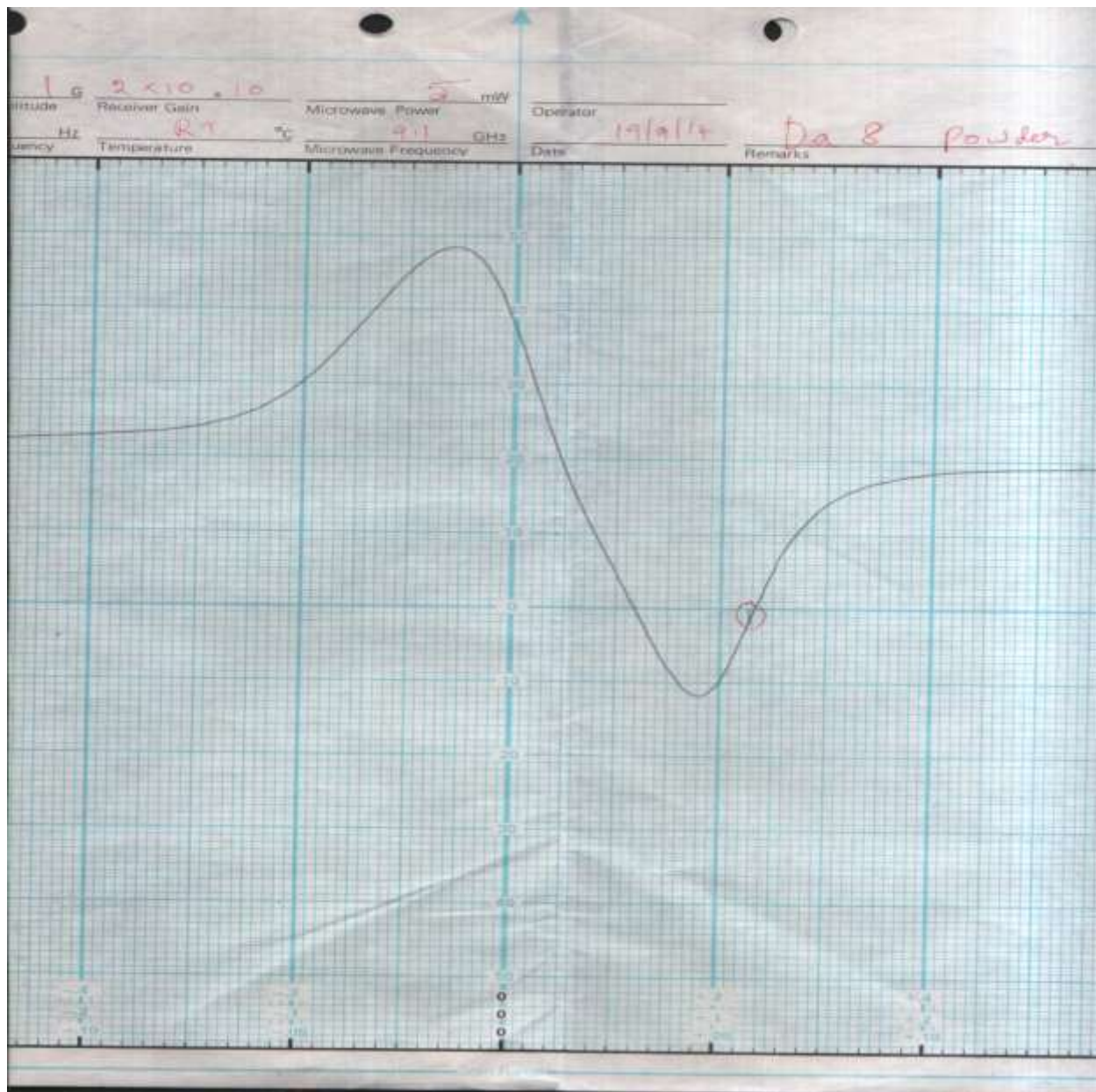
COMPLEX: $[\text{Co}(\text{phen})_2(\text{L}^3)](\text{OAc})_2$



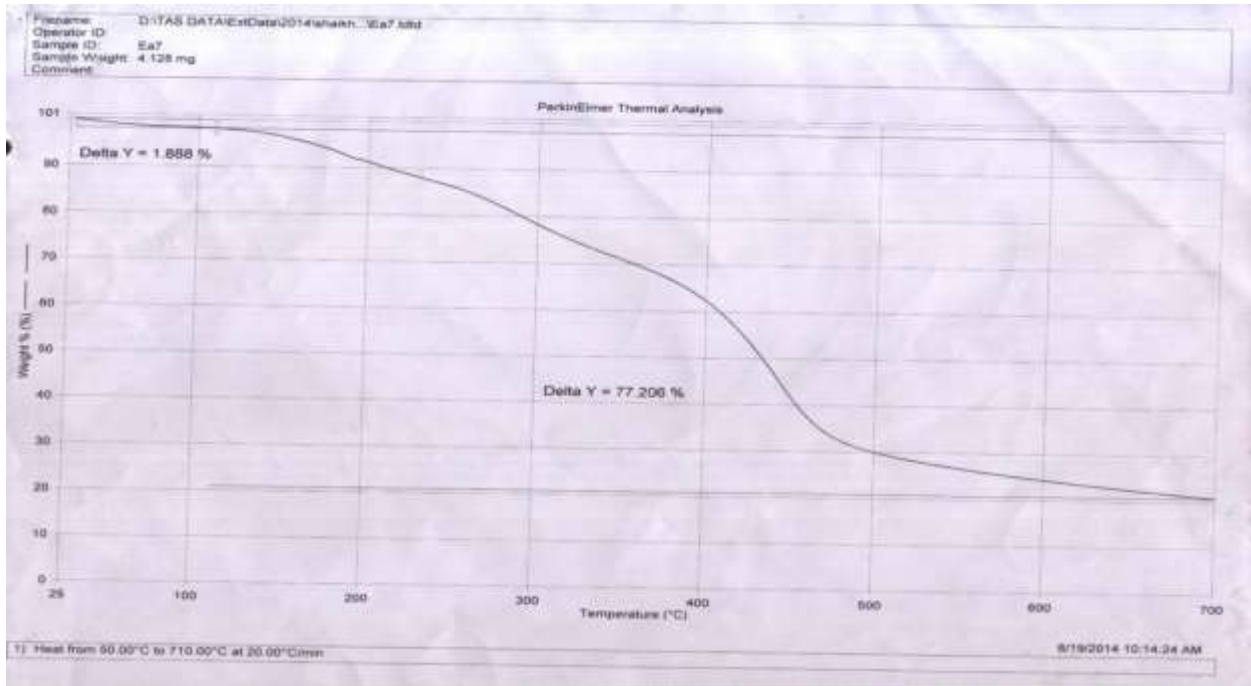
ESR SPECTRA OF COMPLEXES: COMPLEX: $[\text{Cu}(\text{phen})_2(\text{L}^1)](\text{OAc})_2$



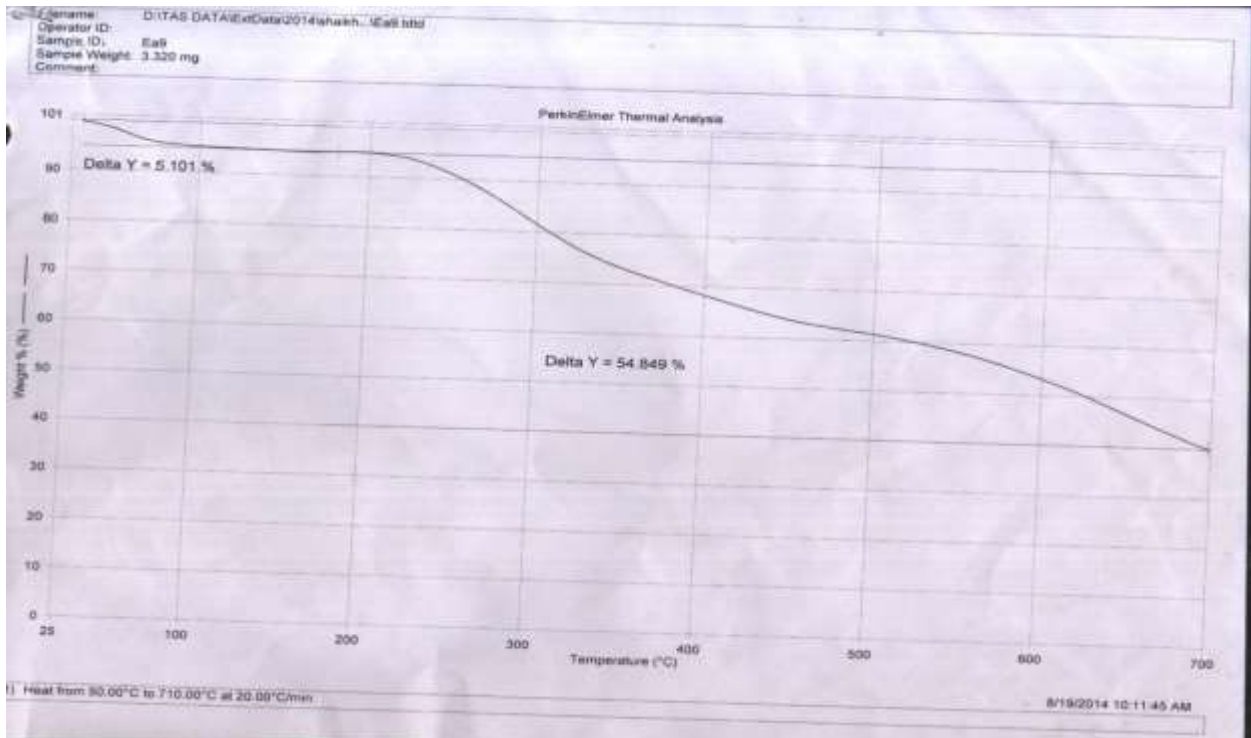
COMPLEX: $[\text{Cu}(\text{phen})_2(\text{L}^2)](\text{OAc})_2$



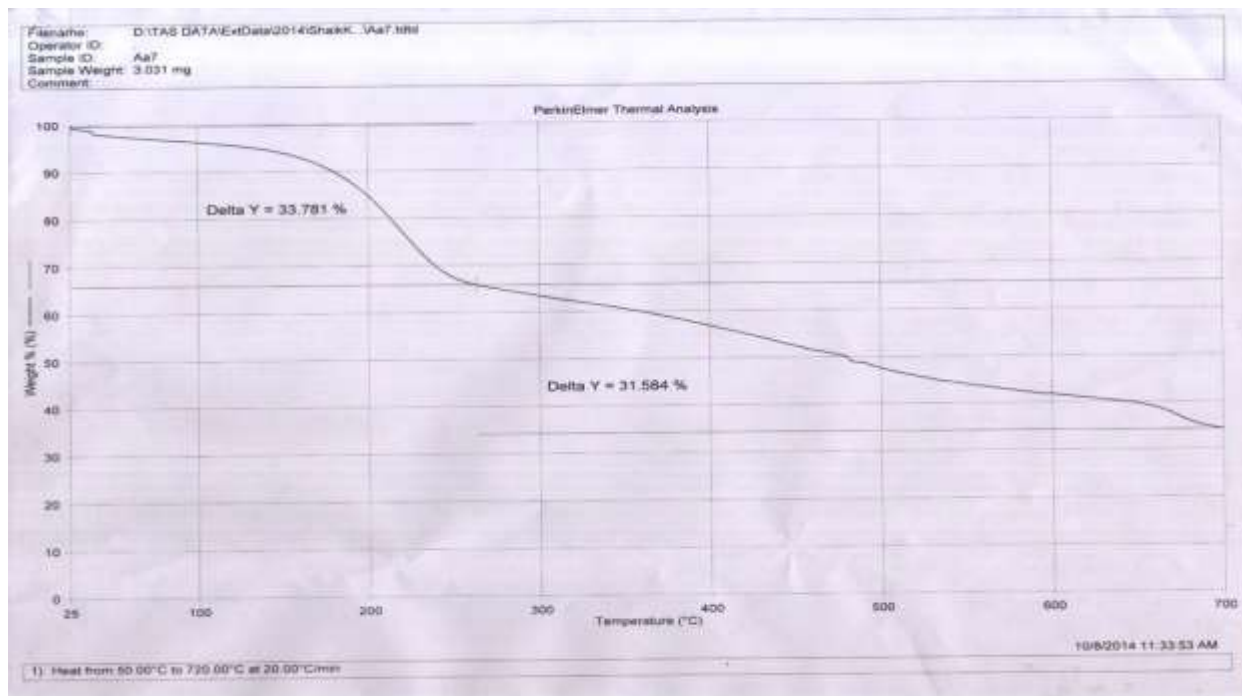
TGA OF COMPLEXES: $[\text{Ni}(\text{phen})_2(\text{L}^1)](\text{OAc})_2$



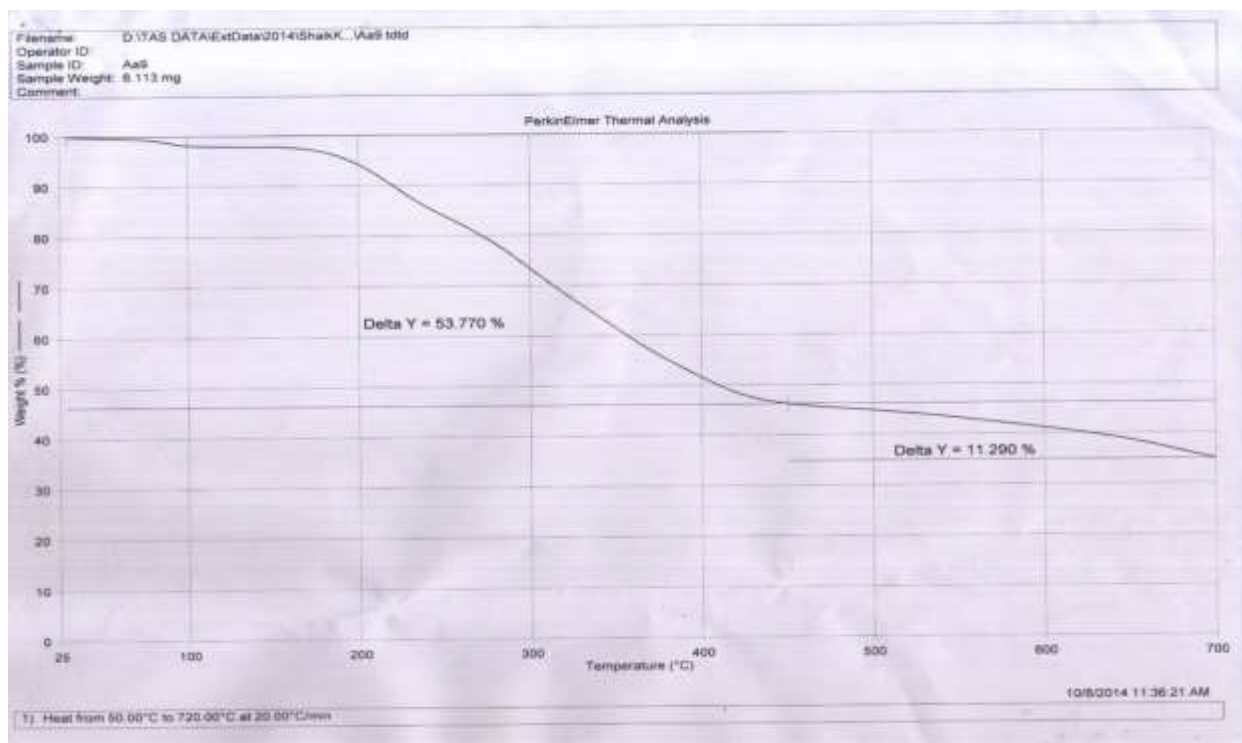
COMPLEX: $[\text{Ni}(\text{phen})_2(\text{L}^3)](\text{OAc})_2$



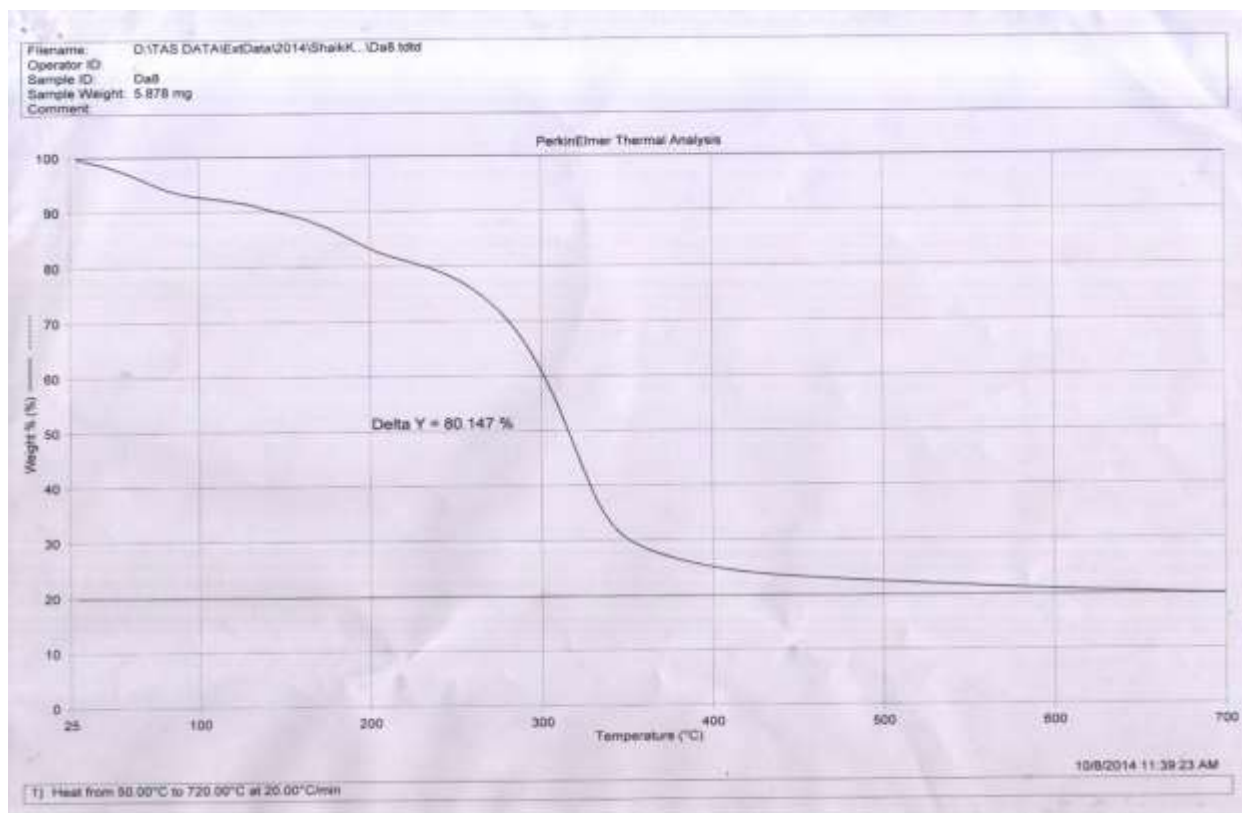
COMPLEX: $[\text{Co}(\text{phen})_2(\text{L}^1)](\text{OAc})_2$



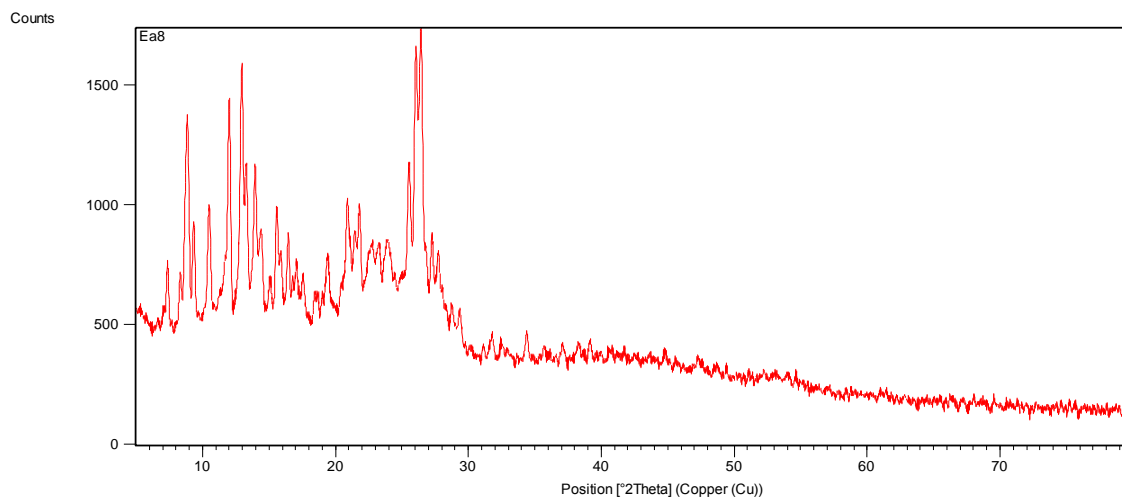
COMPLEX: $[\text{Co}(\text{phen})_2(\text{L}^3)](\text{OAc})_2$



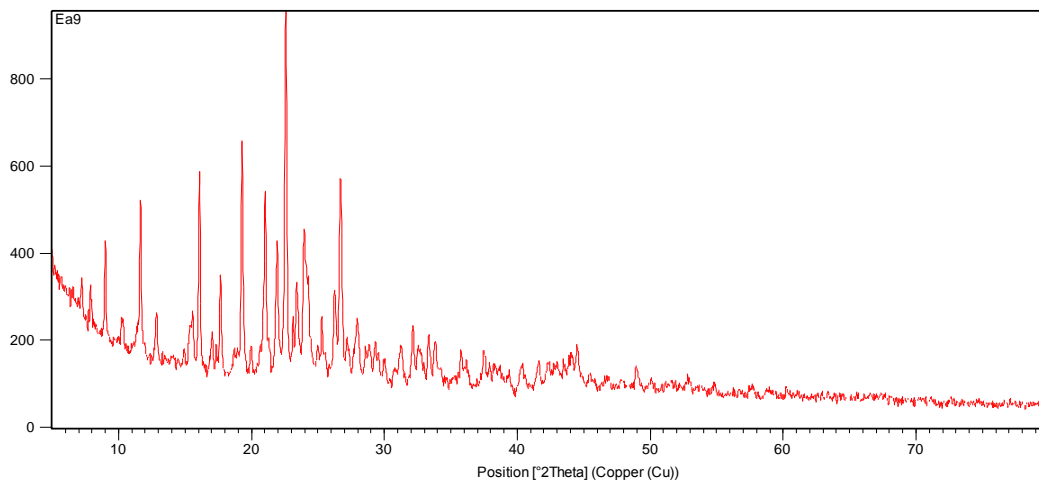
COMPLEX: $[\text{Cu}(\text{phen})_2(\text{L}^2)](\text{OAc})_2$



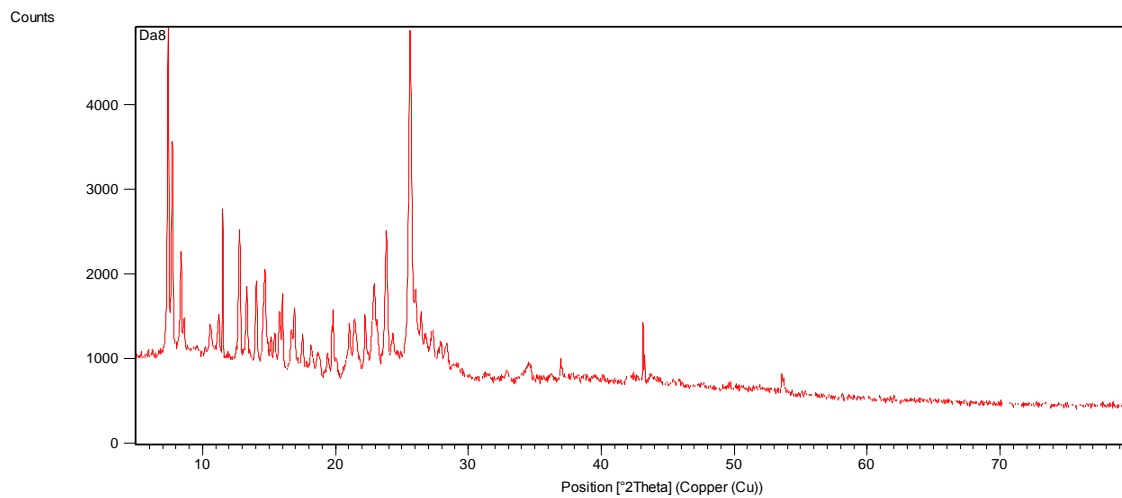
POWDER XRD OF COMPLEXES: $[\text{Ni}(\text{phen})_2(\text{L}^2)](\text{OAc})_2$



COMPLEX: $[\text{Ni}(\text{phen})_2(\text{L}^3)](\text{OAc})_2$



COMPLEX: $[\text{Cu}(\text{phen})_2(\text{L}^2)](\text{OAc})_2$



COMPLEX: $[\text{Co}(\text{phen})_2(\text{L}^3)](\text{OAc})_2$

