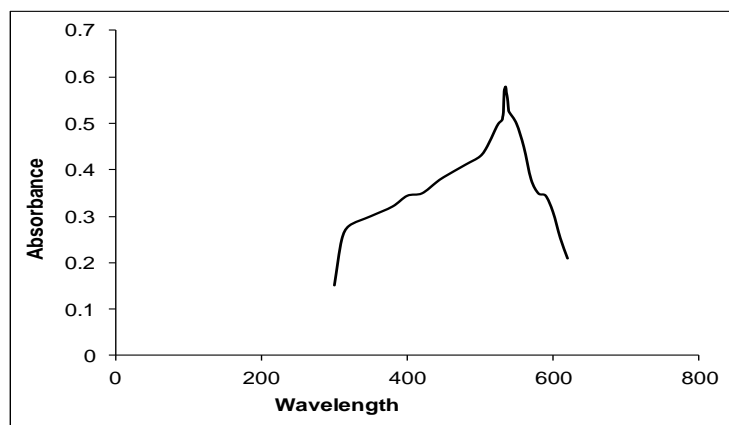
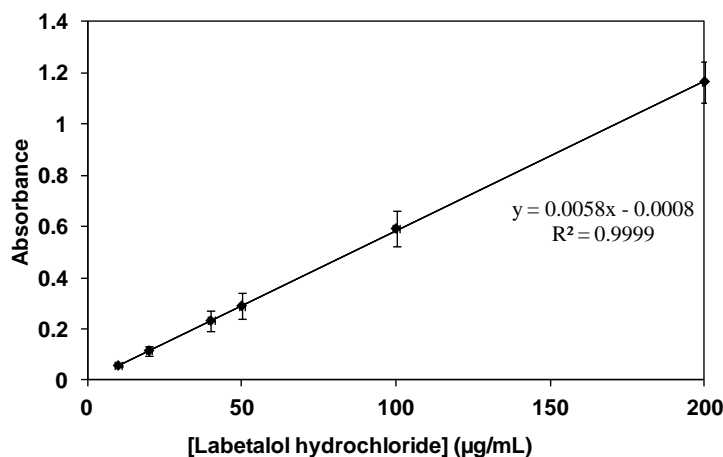


*Supporting Information***Rapid and Simple Spectrophotometric Analysis of Labetalol Hydrochloride in Pharmaceutical, Urine and Blood Samples**Nafisur Rahman¹, Sk Manirul Haque^{1,2,*} and S. M. Zakir Hossain²¹ Department of Chemistry, Aligarh Muslim University, Aligarh, Uttar Pradesh -202002, India² Department of Chemical & Process Engineering Technology, Jubail Industrial College, Post Box No. 10099, KSA*Corresponding author, Email: haque_m@jic.edu.sa, Phone: +96633402412, Fax: 9663402275

Supplementary Figure 1. Wavelength scanning of labetalol (LBT) hydrochloride using a UV-Vis spectrophotometry.



Supplementary Figure 2. Calibration curve of labetalol hydrochloride standard solution (10-200 µg/mL) using a spectrophotometric method at 535 nm.